

West End South CID

Stakeholder Meeting
Tuesday, February 4th, 2020
University City Library
Room 2 – 6:00 PM
Meeting Agenda

1. Updates

- Pro-Bono work Updates

2. Discussion

- ☐ Review of Important Dates
- ☐ Planning Outreach/Signature Strategy

3. Next Steps

- ☐ Petition Review
- ☐ Status on Formation of Non-Profit

4. Open Discussion

Notes:

[illegible]

West End South CID

Stakeholder Meeting
Tuesday, August 6th, 2019
Meeting Notes

1. Updates

- a. Pro-Bono Work Updates: Bryan Cave has officially approved the pro-bono work for the writing of the CID petition and the non-profit paperwork for the West End South CID. Tim O'Connell will be handling the case and has a background as the legal counsel to the St. Louis Board of Aldermen and has experience advising on many legal issues, including redevelopment agreements, tax incentives, and the formation of special taxing districts.

2. Discussion

- a. Strategy for Community Engagement: Handled on a block by block basis. Some blocks may need a door to door effort while many blocks have a strong block unit group/captain and petition signing parties, potlucks, or meetings can be held.
- b. Updating the Stakeholder Contact Sheet: Quickly reviewed who was receiving emails and who was on the stakeholder group listserv. No names were removed, and it was identified that the group wants to keep communication open and the process as transparent as possible.
- c. West End NNO: Tonnie has had an initial conversation with Nancy Mastin and will be communicating to determine a date for NNO/Block Party. This will be an opportunity to keep people engaged and aware of where the group is at in the process of the formation of the CID.
- d. Other Updates: Tonnie has gotten verbal support from Greg Vatterott Jr. in terms of signatures for the petition and the group is interested in learning more about Bonds and options for leveraging funds for projects.

Next Steps

1. Tonnie:
 - a. Is going to be asking if Greg Vatterott Jr. would be willing to come to a meeting to talk about how their group utilized bonds,
 - b. Is going to be working with Nancy Mastin to coordinate NNO planning efforts.
2. Jes:
 - a. Going to see if it's possible to determine where the East Loop CID is at in their sliding scale assessment for the properties

Next Stakeholder Meeting - TENTATIVE
Tuesday, September 3rd, 2019
Conference Call – 7:00

West End, Visitation Park

Monthly Crime report: December 2019

Washington University Medical Center

Summary Notes: West End

- 32 total crimes in December 2019
 - **10% change** compared to December 2018 (29 total crimes)
 - **13 crime(s) against persons** in December 2019
 - **225% change** compared to December 2018 (4 crimes against persons)
- 441 total crimes in 2019
 - **-2% change** compared to this time in 2018 (449 total crimes)
 - **150 crime(s) against persons** in 2019
 - **26% change** compared to this time in 2018 (119 crimes against persons)

West End: Year to Year Comparison

2018

Part 1 Crimes	Jan	Feb	Mar	Apr	May	Jun	Jul	Aug	Sep	Oct	Nov	Dec	Total
Aggravated Assault	5	0	9	7	13	6	8	9	11	10	2	0	80
Arson	0	0	0	0	0	0	1	0	0	0	0	0	1
Burglary	5	2	2	4	6	7	5	6	4	5	5	7	58
Homicide	0	0	1	0	0	0	0	0	0	1	0	0	2
Larceny	18	11	16	18	24	23	16	18	24	21	11	12	212
Motor Vehicle Theft	7	3	1	5	6	4	3	6	4	5	7	6	57
Robbery	4	0	4	5	4	3	3	3	3	3	3	4	39
Total	39	16	33	39	53	43	36	42	46	45	28	29	449

2019

Part 1 Crimes	Jan	Feb	Mar	Apr	May	Jun	Jul	Aug	Sep	Oct	Nov	Dec	Total
Aggravated Assault	6	4	6	13	11	6	9	12	13	11	3	6	100
Arson	0	0	0	0	0	0	1	0	1	1	0	0	3
Burglary	4	4	5	7	5	4	1	6	6	0	0	4	46
Homicide	0	0	0	0	0	0	1	0	1	0	0	1	3
Larceny	7	13	11	19	12	19	20	22	21	15	17	7	183
Motor Vehicle Theft	5	5	5	3	2	1	6	5	8	6	3	7	56
Robbery	6	4	5	1	2	5	3	4	3	6	4	7	50
Total	28	30	32	43	32	35	41	49	53	39	27	32	441

West End: Summary Tables

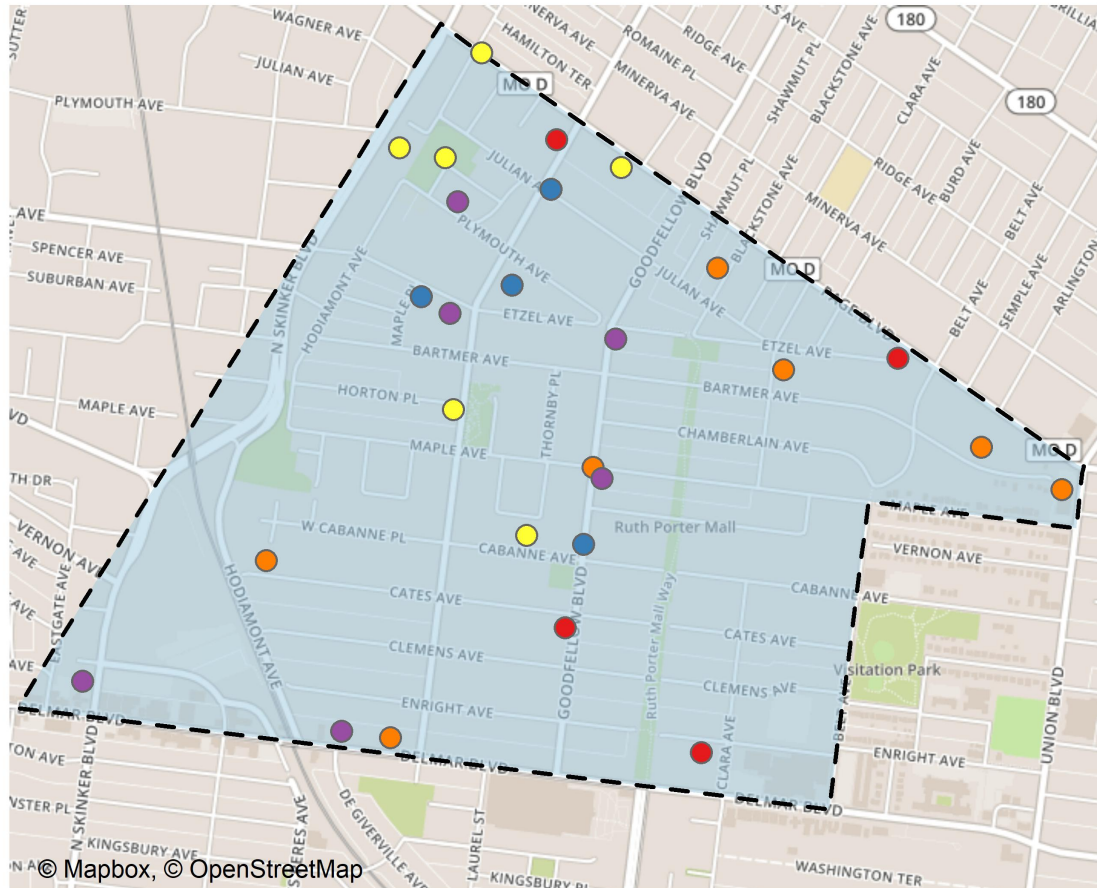
Part 1 Crimes	Number of Crimes
Aggravated Assault	6
Burglary	4
Homicide	1
Larceny	7
Motor Vehicle Theft	7
Robbery	7
Total	32

Crimes Against Persons	Number of Crimes
FALSE	18
TRUE	14
Total	32

Day of the Week	Number of Crimes
Sun	4
Mon	6
Tue	7
Wed	8
Thu	2
Fri	2
Sat	3
Total	32

Time of Day	Number of Crimes
Day	19
Night	13
Total	32

West End: Total Crime Map



- Part 1 Crimes**
- Aggravated Assault
 - Burglary
 - Homicide
 - Larceny
 - Motor Vehicle Theft
 - Robbery

Visitation Park: Summary Notes

- 5 total crimes in December 2019
 - **67% change** compared to December 2018 (3 total crimes)
 - **2 crime(s) against persons** in December 2019
 - **200% change** compared to December 2018 (0 crimes against persons)
- 60 total crimes in 2019
 - **-21% change** compared to this time in 2018 (76 total crimes)
 - **16 crime(s) against persons** in 2019
 - **-16% change** compared to this time in 2018 (19 crimes against persons)

Visitation Park: Year to Year Comparison

2018

Part 1 Crimes	Jan	Feb	Mar	Apr	May	Jun	Jul	Aug	Sep	Oct	Nov	Dec	Total
0	0	0	0	0	0	0	0	0	0	0	0	0	0
Aggravated Assault	0	2	0	3	0	3	3	3	0	0	1	0	15
Arson	0	0	0	0	0	0	0	0	0	0	1	0	1
Burglary	1	3	0	1	0	0	0	4	0	1	0	3	13
Homicide	0	0	0	0	0	0	0	0	0	0	0	0	0
Larceny	4	0	0	2	2	5	6	3	8	4	3	0	37
Motor Vehicle Theft	0	0	0	1	2	1	1	0	0	1	0	0	6
Robbery	0	1	0	0	0	0	0	0	1	2	0	0	4
Total	5	6	0	7	4	9	10	10	9	8	5	3	76

2019

Part 1 Crimes	Jan	Feb	Mar	Apr	May	Jun	Jul	Aug	Sep	Oct	Nov	Dec	Total
Aggravated Assault	1	0	3	0	0	0	1	1	4	1	0	1	12
Arson	0	0	0	0	0	0	0	0	0	0	0	0	0
Burglary	0	1	2	1	2	0	0	0	0	0	1	0	7
Homicide	0	0	0	0	1	0	0	0	0	0	0	0	1
Larceny	2	1	1	0	0	1	2	8	2	7	2	3	29
Motor Vehicle Theft	1	1	0	1	1	0	0	0	1	0	2	0	7
Robbery	2	0	0	0	0	0	0	0	0	1	0	1	4
Total	6	3	6	2	4	1	3	9	7	9	5	5	60

Visitation Park: Summary Tables

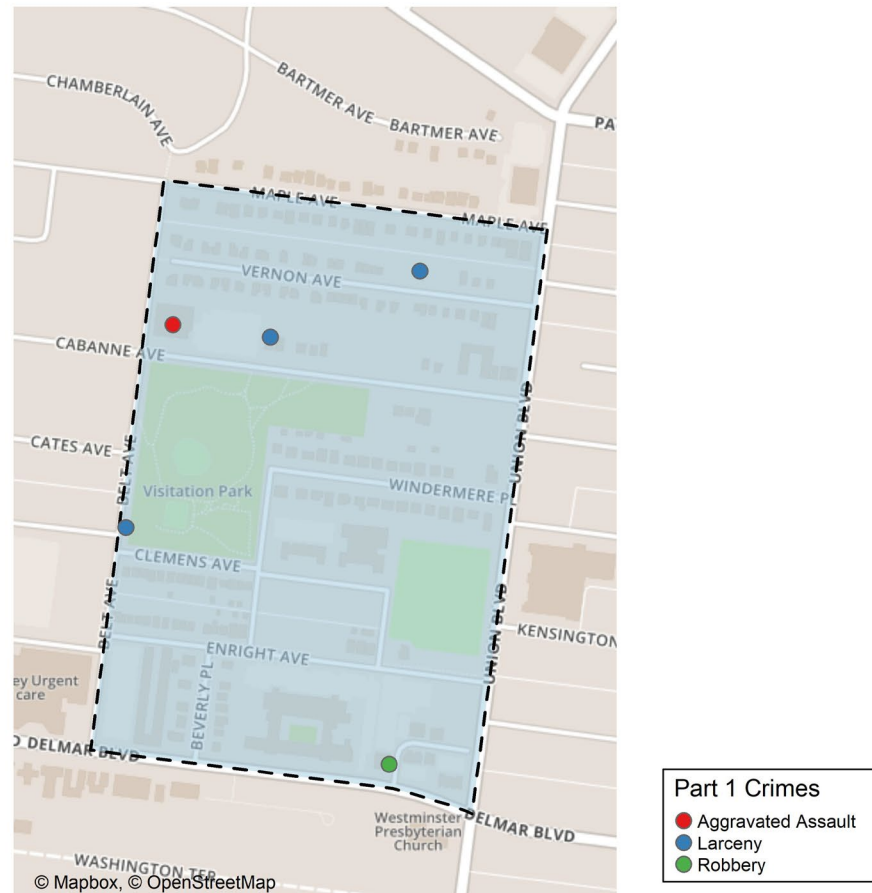
Day of the Week	Number of Crimes
Sun	0
Mon	0
Tue	0
Wed	0
Thu	1
Fri	1
Sat	3
Total	5

Crimes Against Persons	Number of Crimes
FALSE	3
TRUE	2
Total	5

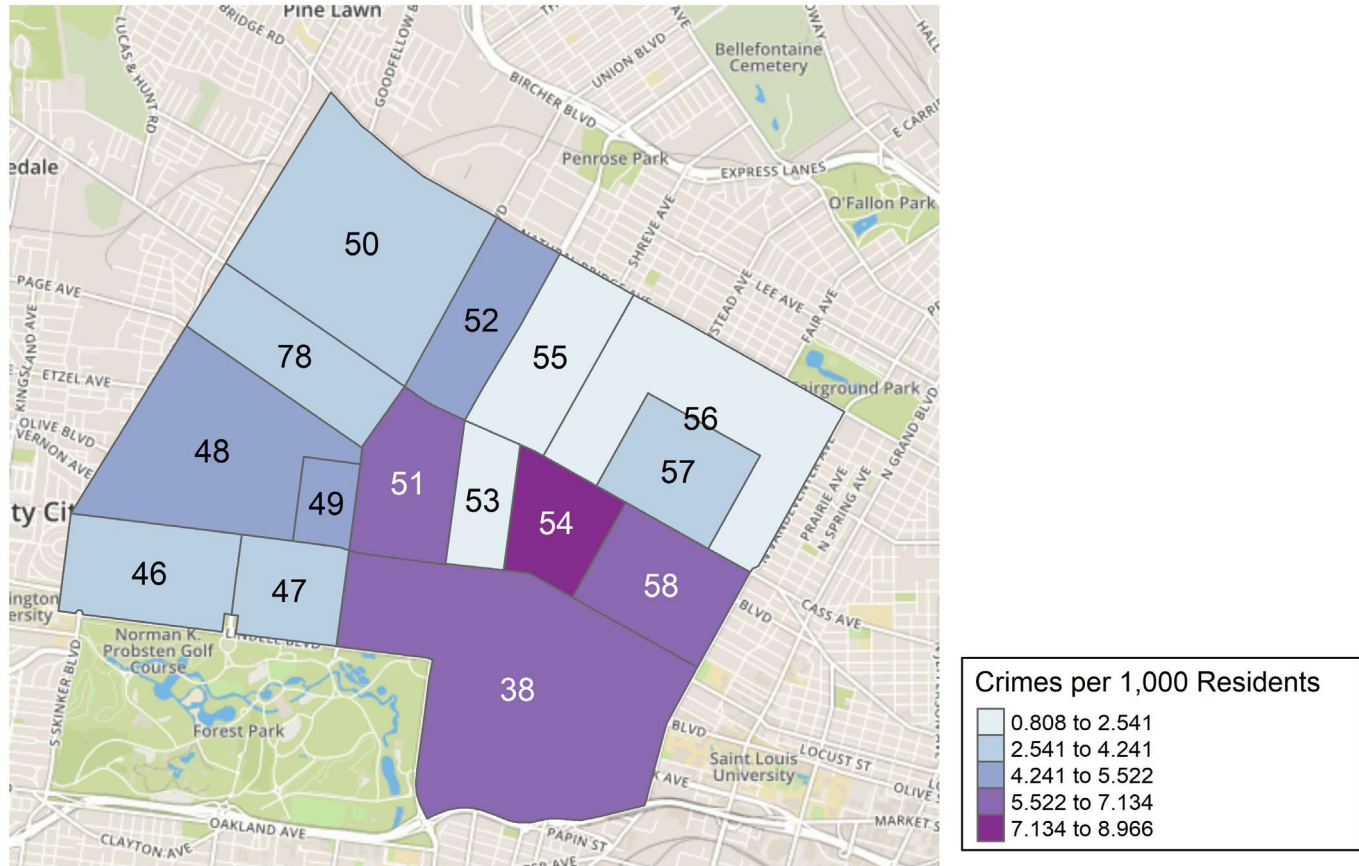
Part 1 Crimes	Number of Crimes
Aggravated Assault	1
Larceny	3
Robbery	1
Total	5

Time of Day	Number of Crimes
Day	4
Night	1
Total	5

Visitation Park: Total Crime Map



District 5: Crime Rates Map



District 5: Density Map Explanation

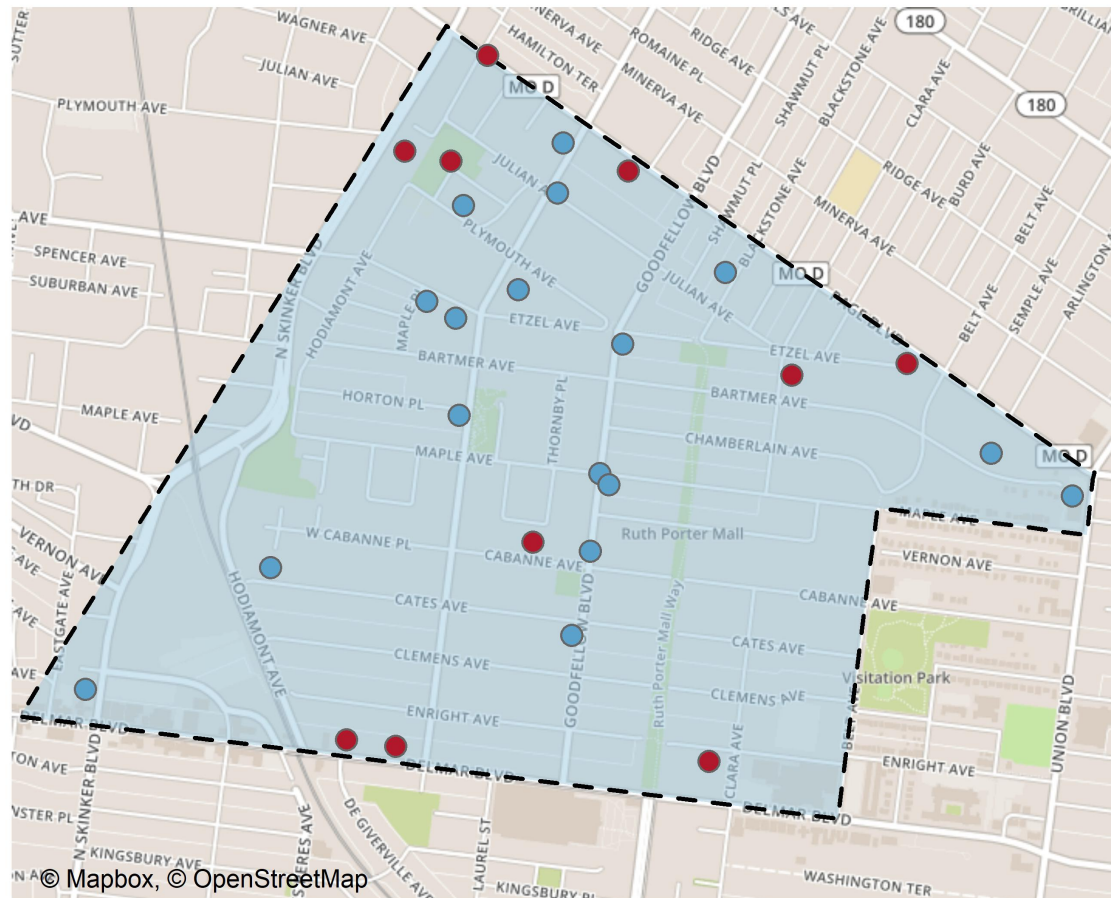
There are 15 neighborhoods in District 5.

- **The minimum number of crimes** in one neighborhood was 3 (Fountain Park)
- **The maximum number of crimes** in one neighborhood was 100 (Central West End)
- **The mean number of crimes** in one neighborhood was 19.33
- **The minimum rate of crimes** in one neighborhood was 0.81 (Greater Ville)
- **The maximum rate of crimes** in one neighborhood was 8.97 (Lewis Place)
- **The mean rate of crimes** in one neighborhood was 4.64

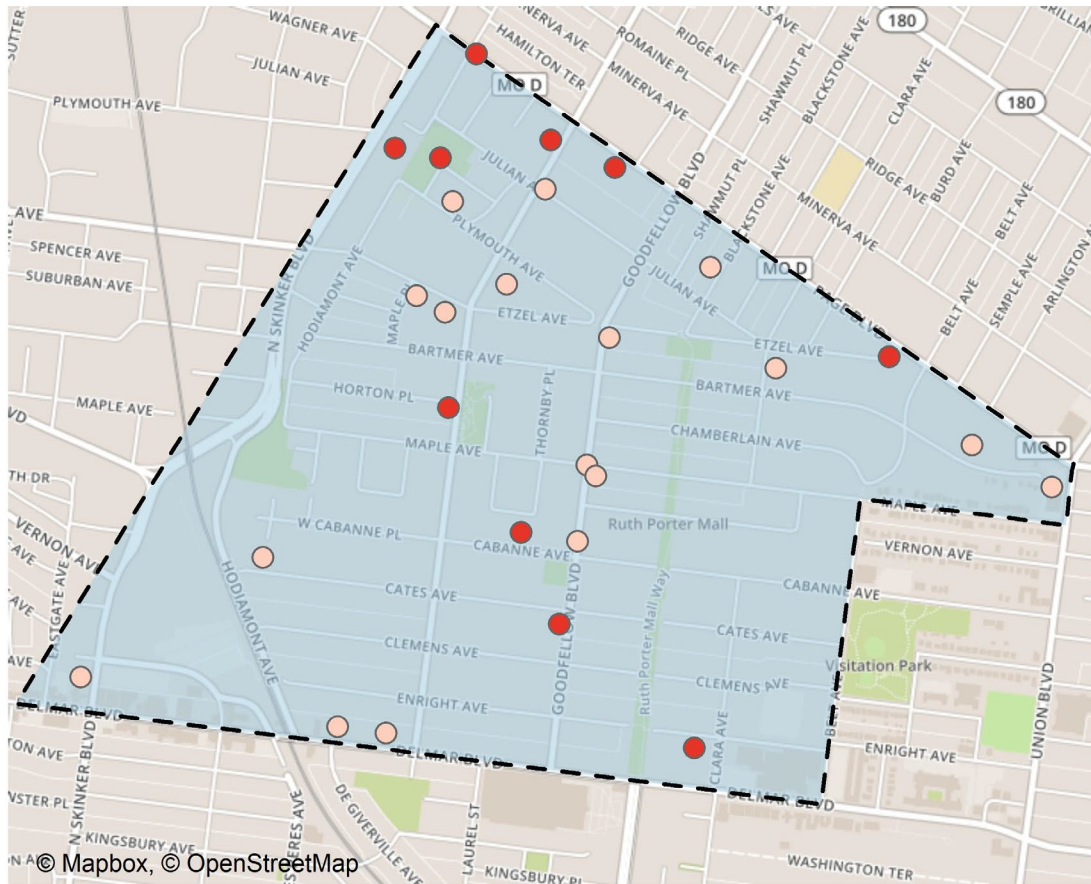
West End: Neighborhood Detail

Appendix 3

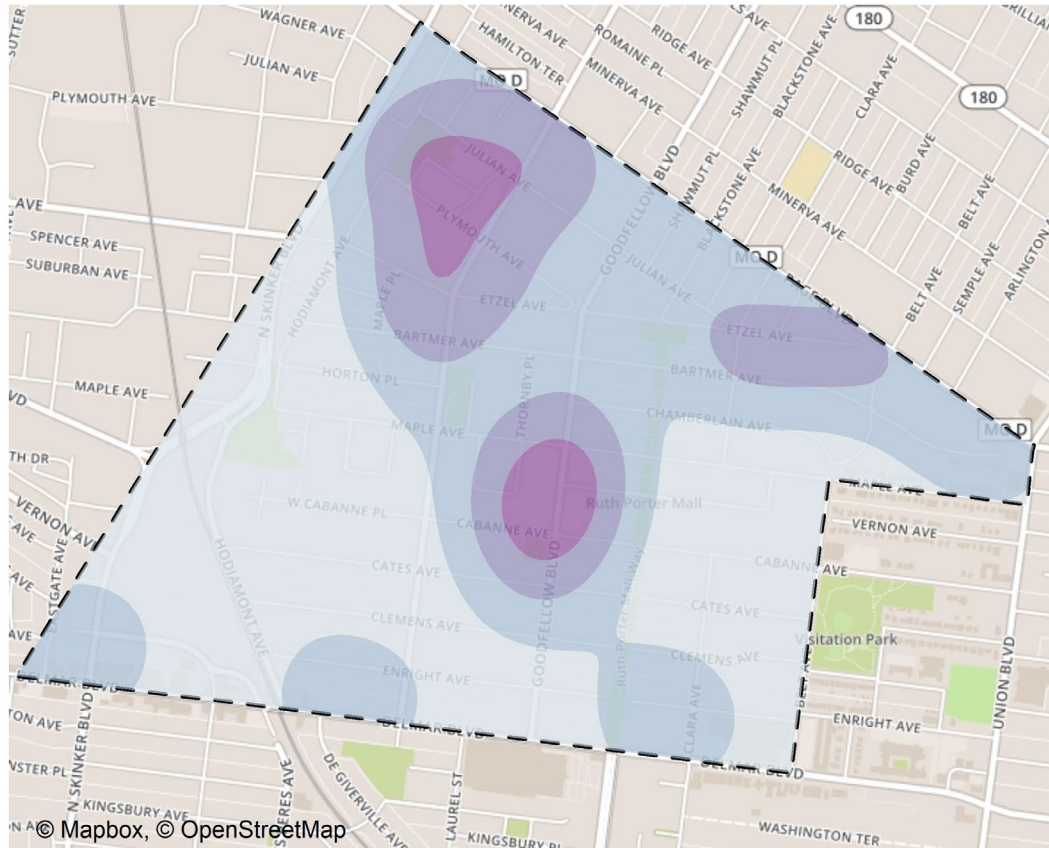
West End: Time of Crimes Map



West End: Violent Crime Map



West End: Crime Density Map



West End: Larceny Breakdown

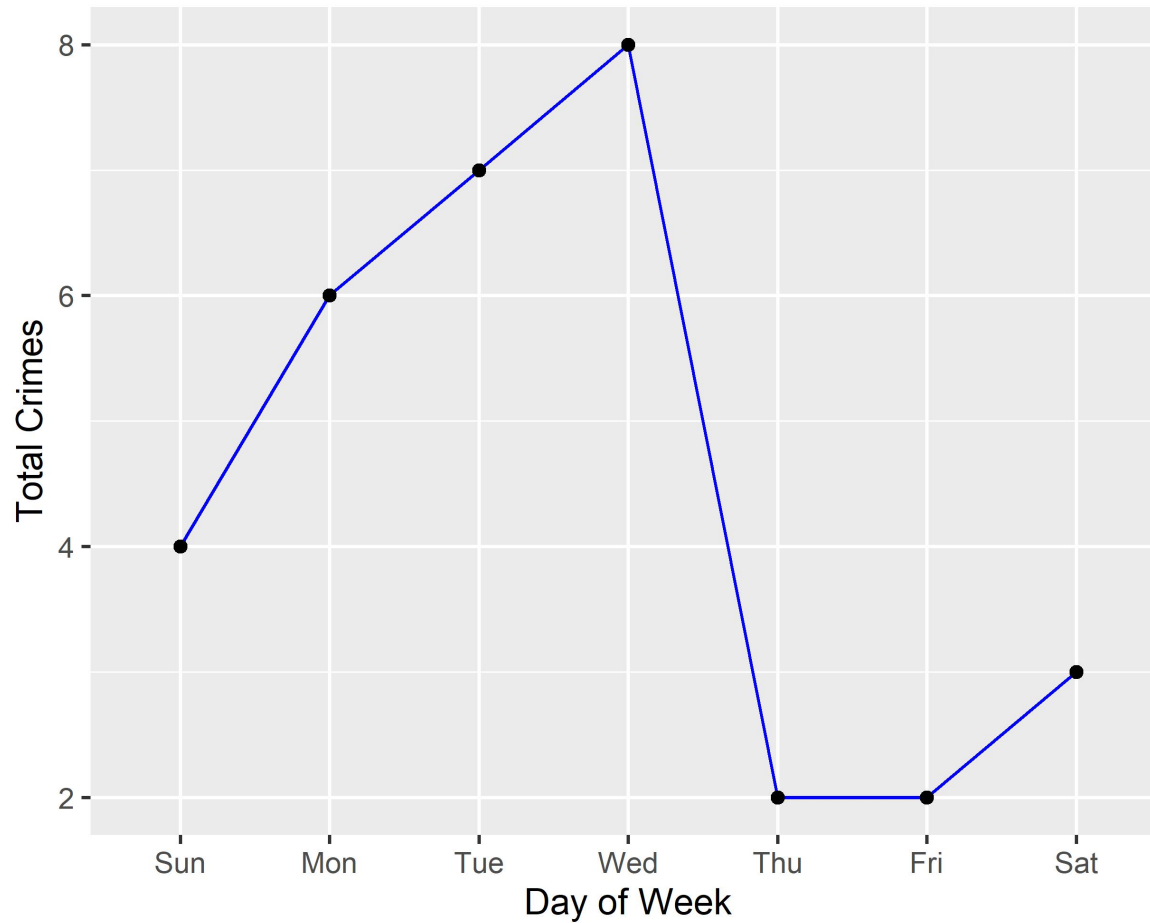
Day of the Week	Number of Crimes
Sun	1
Mon	1
Tue	2
Thu	1
Fri	1
Sat	1
Total	7

Time of Day	Number of Crimes
Day	6
Night	1
Total	7

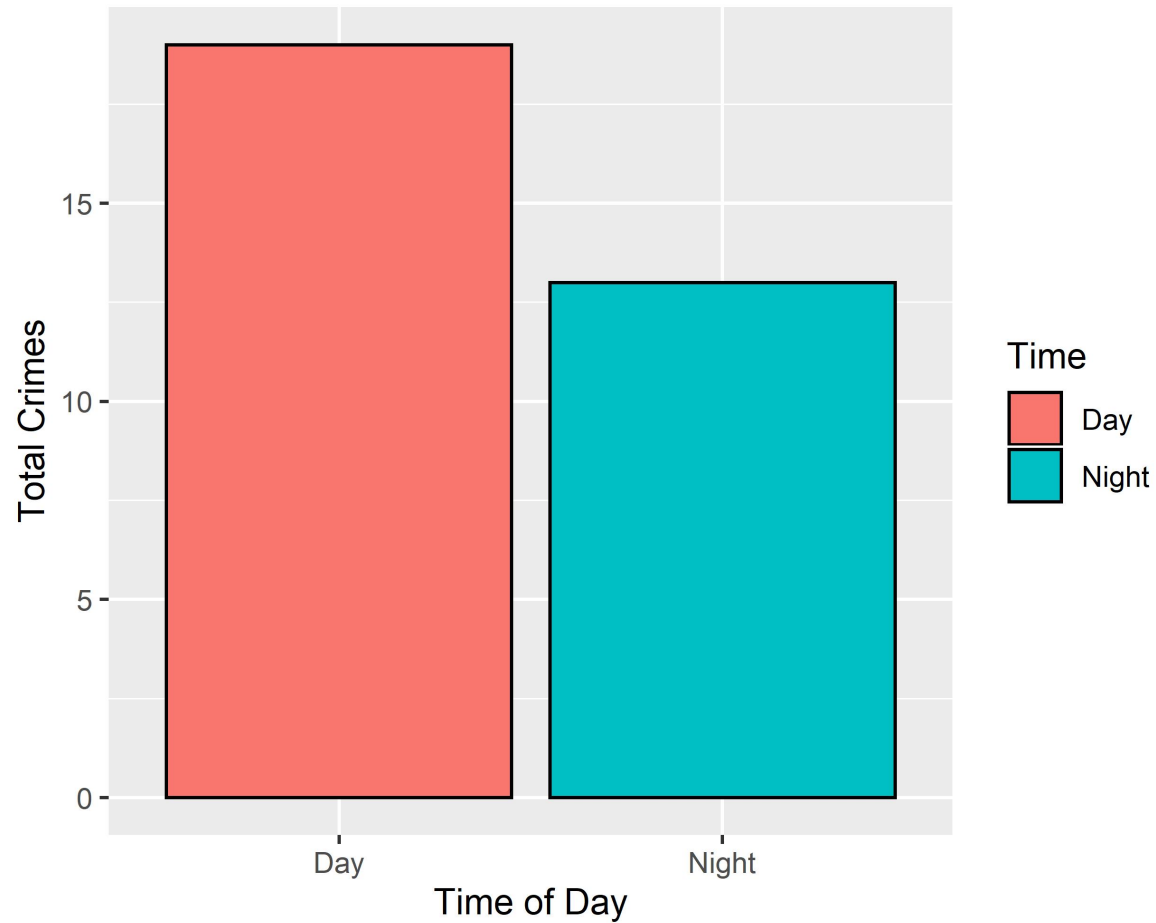
Type of Larceny	Number of Crimes
All Other	5
From Motor Vehicle	2
Total	7

Monetary	Number of Crimes
\$500 - \$24,999	3
Under \$500	4
Total	7

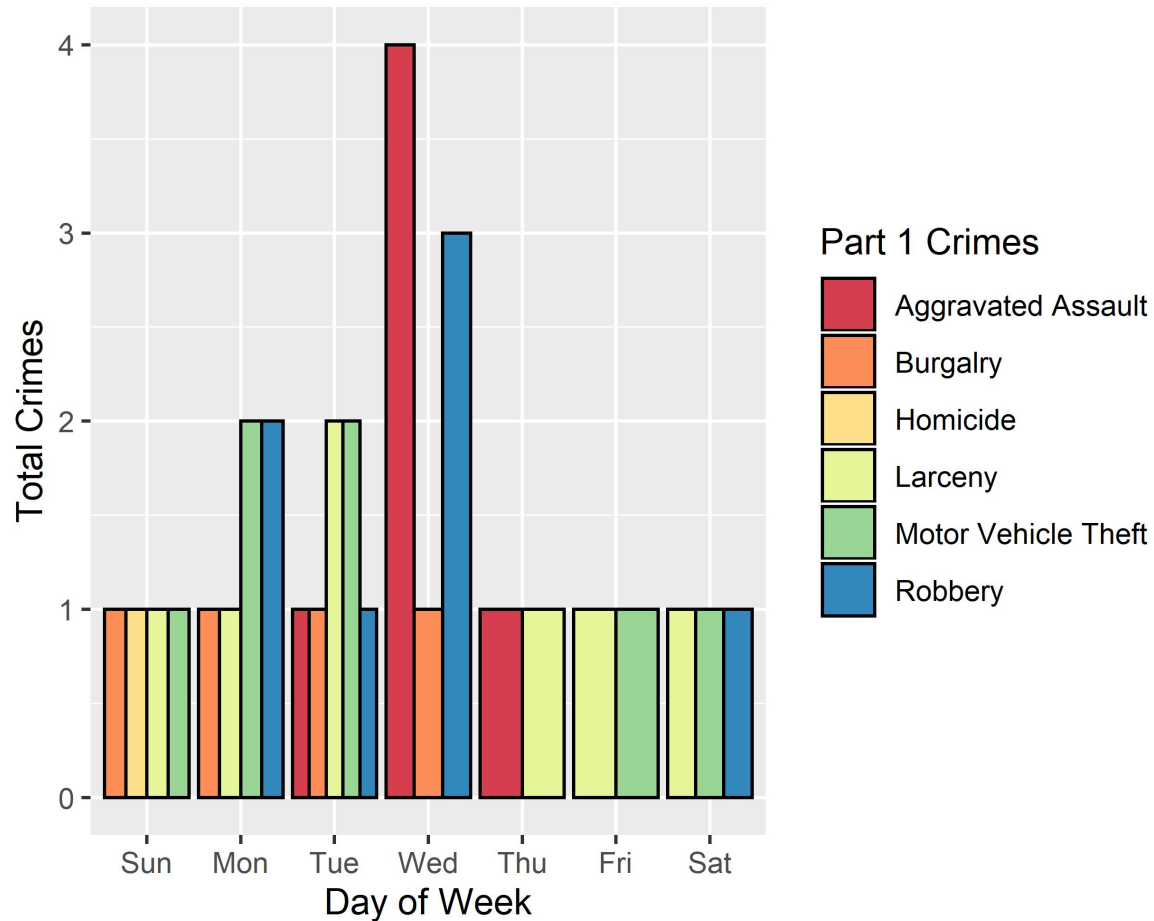
West End: Total Crimes by Days of the Week



West End: Crimes by Time of Day



West End: Crimes by Day & Category



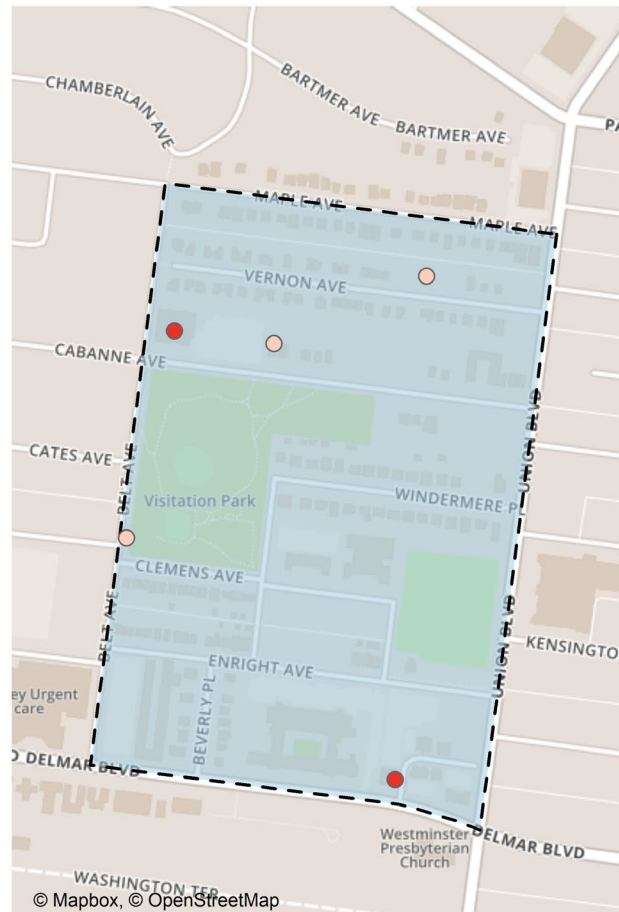
Visitation Park: Neighborhood Detail

Appendix 4

Visitation Park: Time of Crimes Map



Visitation Park: Violent Crime Map



Violent
○ FALSE
● TRUE

Visitation Park: Larceny Breakdown

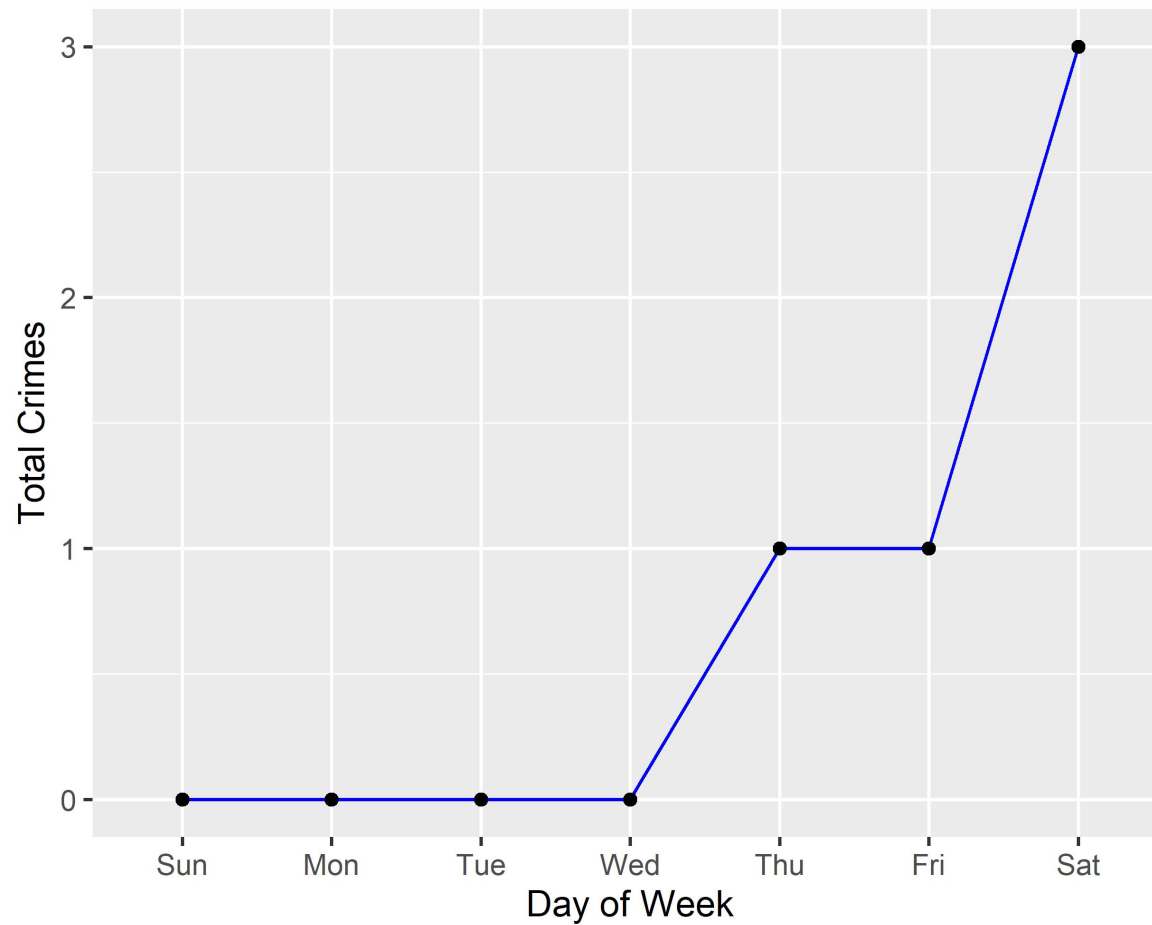
Day of the Week	Number of Crimes
Thu	1
Fri	1
Sat	1
Total	3

Time of Day	Number of Crimes
Day	3
Total	3

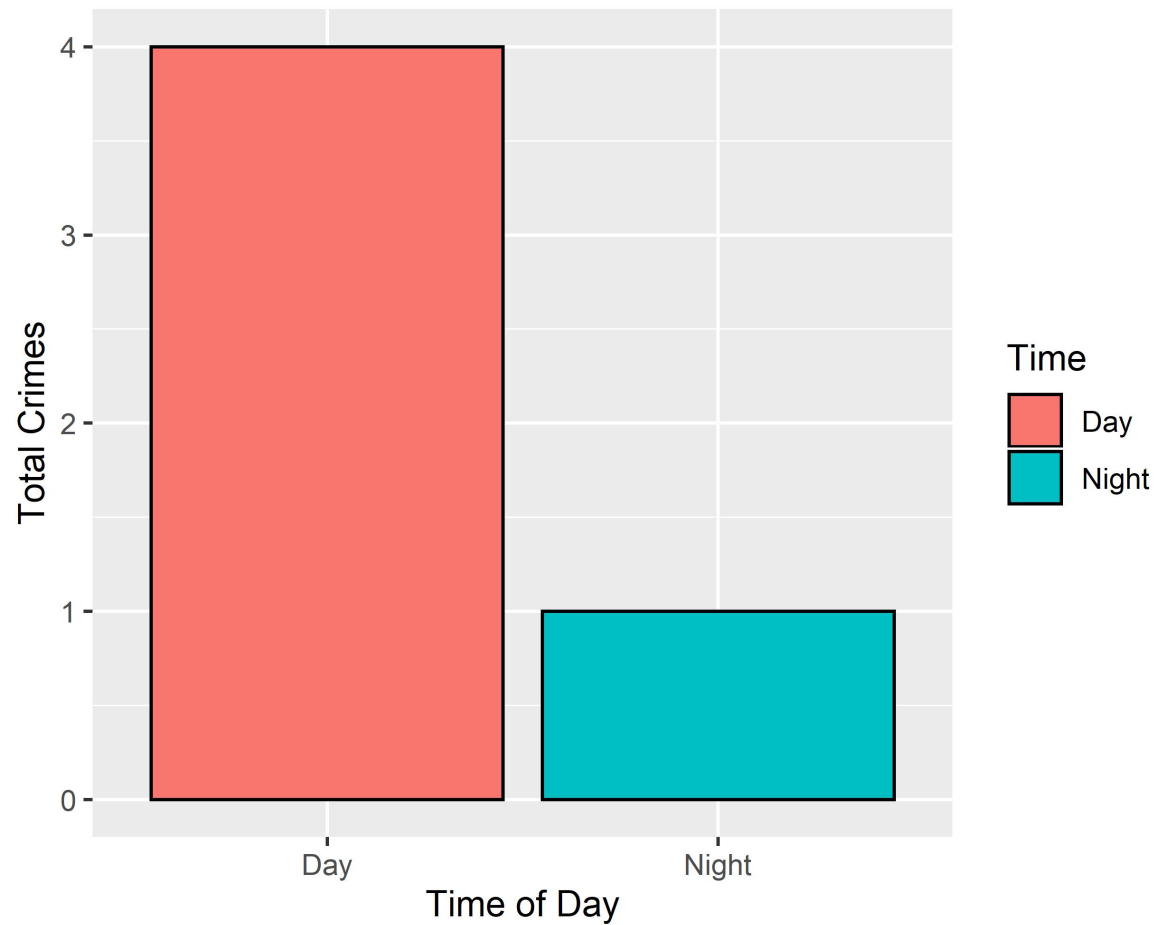
Type of Larceny	Number of Crimes
All Other	1
Motor Vehicle Parts	2
Total	3

Monetary	Number of Crimes
\$500 - \$24,999	1
Under \$500	2
Total	3

Visitation Park: Total Crimes by Days of the Week



Visitation Park: Crimes by Time of Day



Visitation Park: Crimes by Day & Category

